

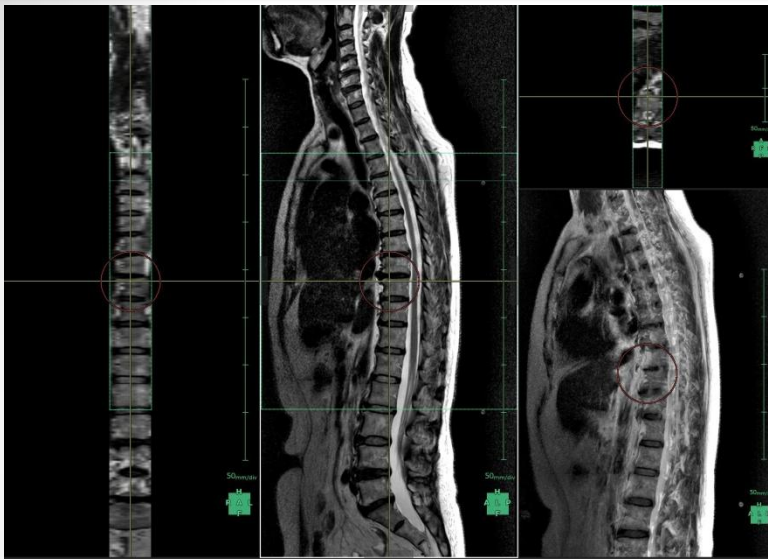
Combination

You can merge several series image datasets to one series and save as DICOM image.

Recommended Image ▶ Few parts of large region image CT or MRI data sets.

You can merge as one series data set and show which was taken several series on one large area.

Registration by DICOM position information

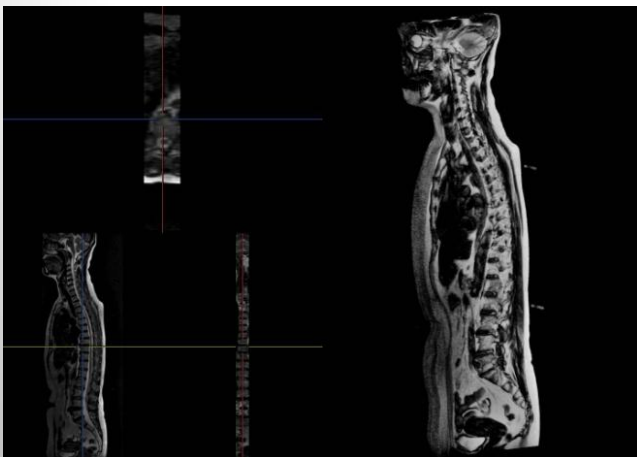


Register each other image position based by coordinate information.

Possible to automatic registration to use overlapped image position .

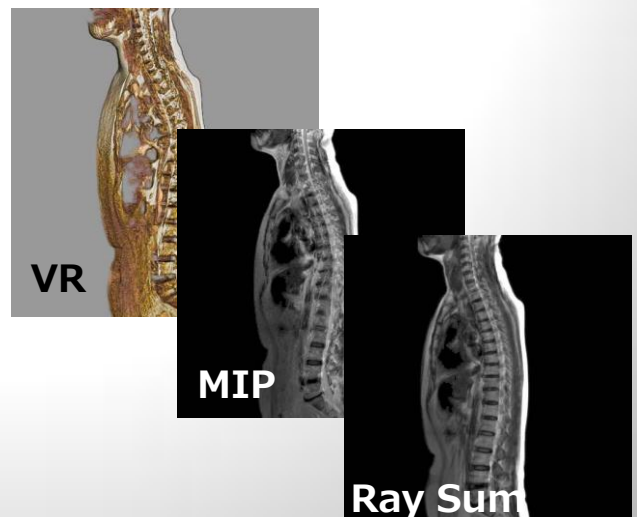
Sure you can adjust manually too.

Save as DICOM image after edit



Save as one image and can send to server

Edit on 3D Viewer



You can use on other application which you reconstructed on Combination Application

