

# Tx Map

## Create 3D Tx mapping to use calculated Tx value by Multi Echo MR image for Knee, liver and other organs

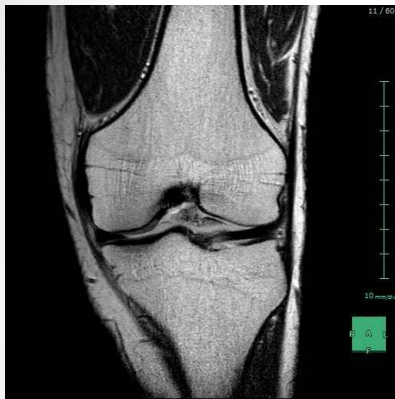
Recommended Image ▶ Multi Echo sequence protocol MR image

Analysis image conditions ▶ Liver knee etc

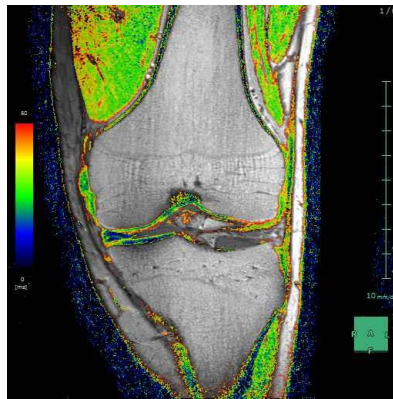
Display calculated T2 value, T2\* value, calculate result and graph used Multi echo sequence protocol MR image. Also extract bone automatically and can display fusion map

### Result of calculation

#### T2 Image



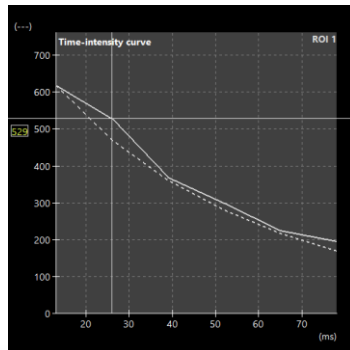
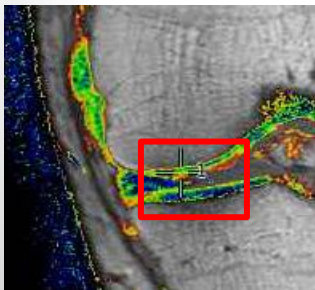
#### T2 map image



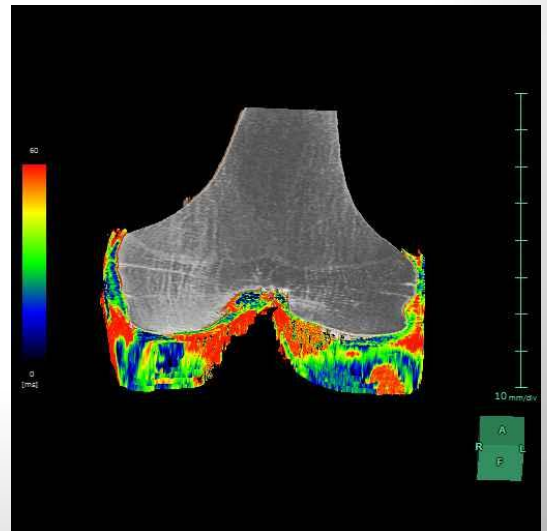
Display color map of the calculated result used multi echo sequence protocol MR image.

Display this map as same as you load the data set.

### Calculated result, Graph display



### Bone extraction, 3D fusion



Automatic Bone extraction and mapping .

#### Measurement result

| # | Pixel | T2*Max | T2*Min | T2*Ave |
|---|-------|--------|--------|--------|
| 1 | 105   | 136.1  | 17.1   | 50.3   |

Calculated result and graph to make ROI