

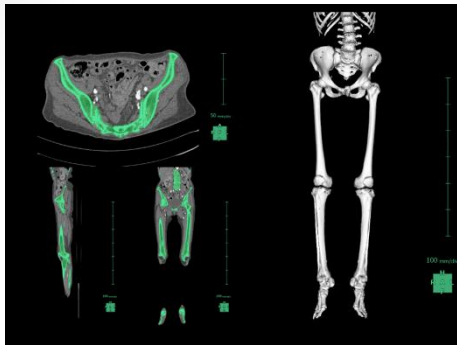
Surface

STL File Export

Create objects(Organs) STL. File from such as 3D Viewer and other applications.

- Supported STL file ▶ Binary STL, ASCII STL, Color STL.
- Supported applications ▶ 3D Viewer, Liver Analysis(CT), Lung Analysis Resection, Kidney Analysis, Coronary Analysis(CT).

Can export STL files which extracted organs and vessels from each applications.
Also can use for 3D printer to import STL files.



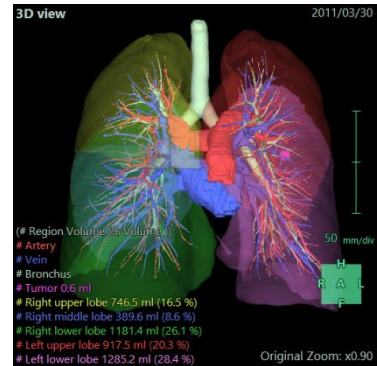
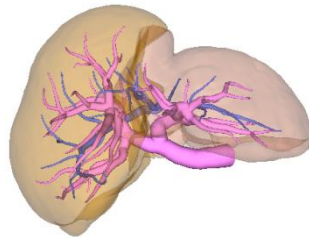
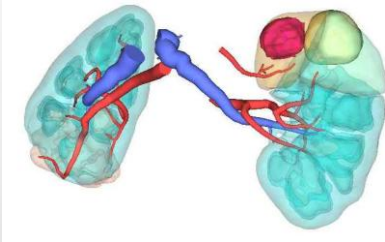
Bone.stl

Easy Operation

■ Kidney Analysis result

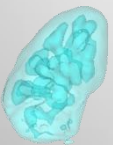
■ Liver Analysis result

■ Lung Analysis resection result



Surface display

※Export file style: ASCII stl. Binary stl. Color stl.



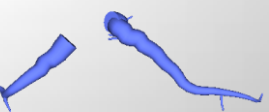
Kidney stl



Tumor stl



Renal Artery stl



Renal Vein stl

※ STL data must be used for reference image

※ For 3D printing please prepare 3D printer and other STL file edit software yourself.